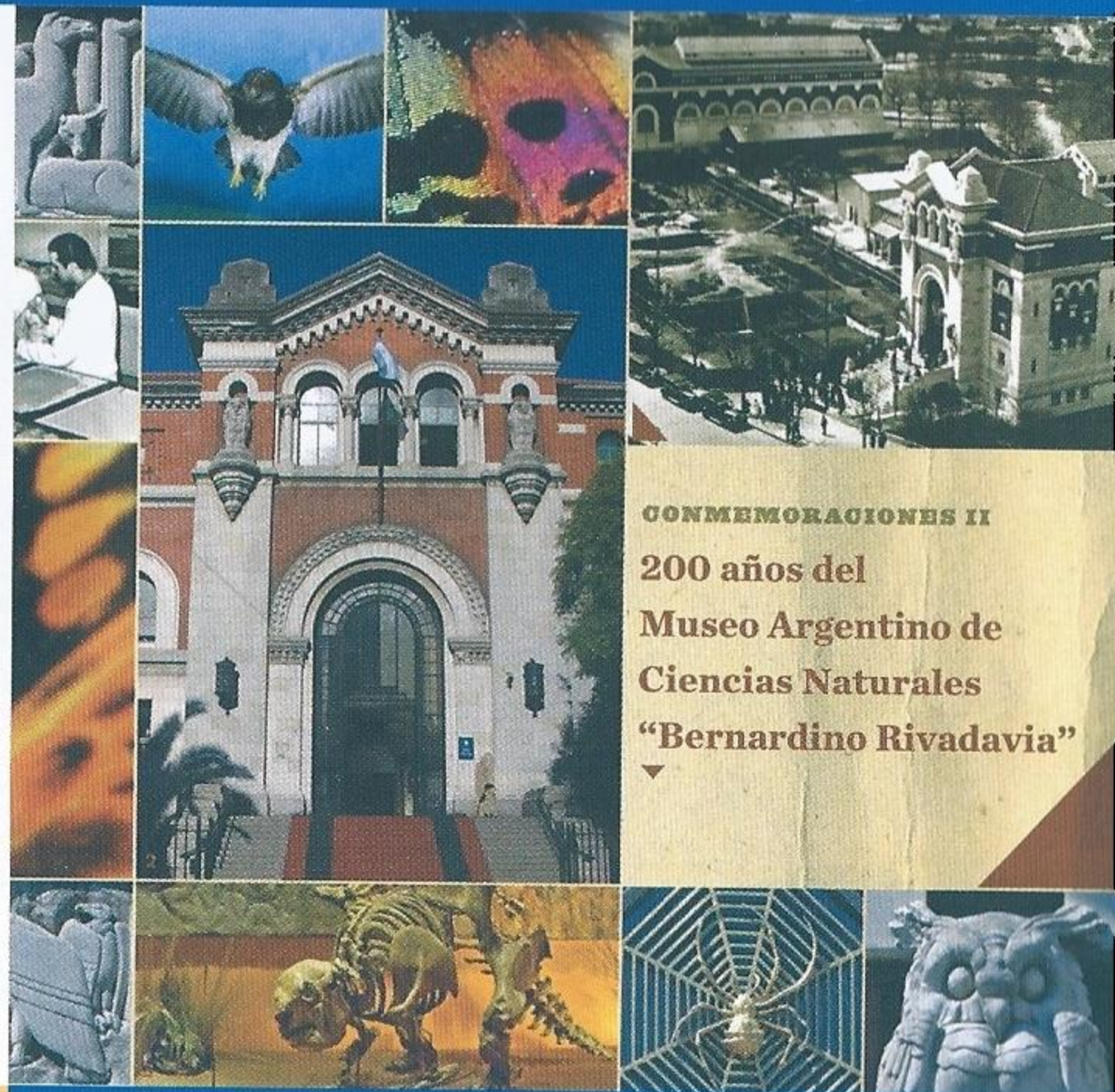




Matasellos día de emisión:
 síntesis de una de las dos arañas en su tela fundidas en bronce
 y aplicadas en la gran puerta de hierro forjado y vidrio que forma
 parte de la entrada principal del museo.



volante filatélico nº 1241



CONMEMORACIONES II
200 años del
Museo Argentino de
Ciencias Naturales
“Bernardino Rivadavia”



CONMEMORACIONES II

▲ 200 años del Museo Argentino de Ciencias Naturales "Bernardino Rivadavia"

VALOR VIÑETA

- En todos los sellos, isologotipo del Museo Argentino de Ciencias Naturales-CONICET y leyenda "1812-2012".
- \$ 2,50 ▶ Fotografía del montaje -en la planta baja del edificio del museo- del esqueleto del elefante *Dhalius* muerto en el zoológico de la ciudad de Buenos Aires en 1943.
 - \$ 2,50 ▶ Vista de la nueva sala de aves del museo, inaugurada a fines del año 2010. Encuadre de la vitrina dedicada a mostrar las diferentes funciones de las plumas.
 - \$ 2,50 ▶ Mariposas de la especie *Agrias narcissus*. Vista de una de las colecciones de la División Entomología, que conserva cerca de 2.000.000 de insectos.
 - \$ 2,50 ▶ *Bonatitan reigi* (*), dinosaurio saurópodo de fines del período cretácico (aproximadamente entre 85 y 65 millones de años), descubierto en la provincia de Río Negro, República Argentina, y que se exhibe en la sala de paleontología del museo desde el año 2011.

TIRADA ▶ 60.000 ejemplares de cada viñeta

DISEÑO ▶ Filatelia, Correo Oficial de la República Argentina S.A.

FOTOGRAFÍA ▶ Montaje del esqueleto de elefante: archivo histórico del museo. Mariposas y sala de aves: Marcelo Canevari. *Bonatitan reigi*: Ángel Fusaro.

FORMATO DE LOS SELLOS ▶ 2 de 34 x 44 mm y 2 de 44 x 34 mm

PLIEGOS DE ▶ 20 ejemplares

PERFORADO ▶ 14

COLOR ▶ cuatro colores, más una tinta metalizada

PAPEL ▶ sin filigrana, sin fosforescencia

PROCEDIMIENTO ▶ offset

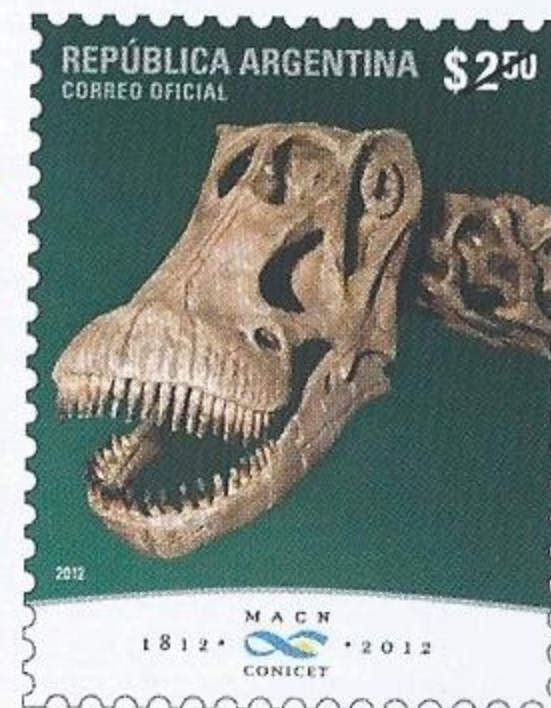
IMPRESIÓN ▶ Letra Viva S.A.

SOBRES ▶ 4.000 ejemplares

"DÍA DE EMISIÓN"

Día de emisión: 28 de abril de 2012

(*) El género *Bonatitan* es un homenaje al paleontólogo argentino José Bonaparte y la especie *reigi* está dedicada al paleontólogo argentino Osvaldo Reig.



COMMEMORATIONS II

▲ 200TH anniversary of the “Bernardino Rivadavia” Argentine Natural Sciences Museum

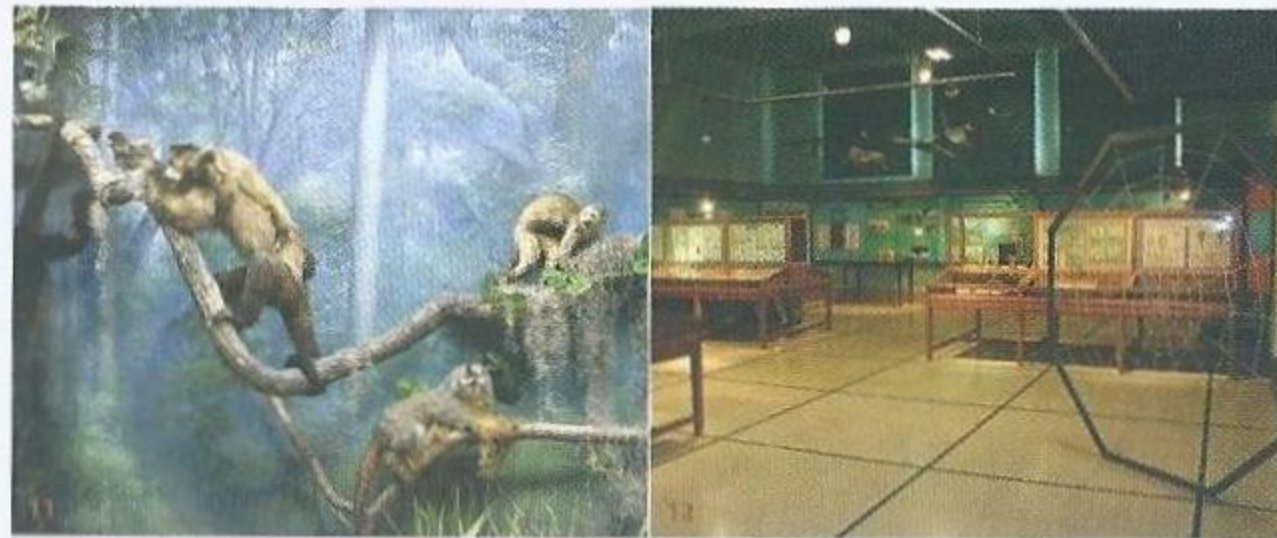
The “Bernardino Rivadavia” Argentine Natural Sciences Museum (MACN – CONICET) is the oldest in the Argentine Republic. It was founded only two years after the May Revolution in 1810; thus its birth should be interpreted with regard to a national identity construction project as well as with the development of scientific history in the early Modern Age.

The Museum’s path: from curios cabinets to the disclosure of scientific knowledge

The early years of the Museum coincide with a time when collectors gathered pieces of natural history and bright objects in what they called “curios cabinets”. These private collections originated herbaria and the zoological series that would later on be part of the museum’s exhibits.

During all those years, different personalities that lead the Museum gave their own particular style and vision to its management. When Hermann Burmeister was named director in 1862 began a 30- year management that became the most significant in the Museum’s history, due the magnitude of the implemented changes. During this stage the institution had a strictly scientific orientation and became an internationally renowned paleontological centre.

In 1892 Burmeister was followed by Karl Berg, who had in mind a much more open museum. He therefore worked intensely to give the public greater access to all exhibits. In 1902 palaeontologist Florentino Ameghino became the first Argentine



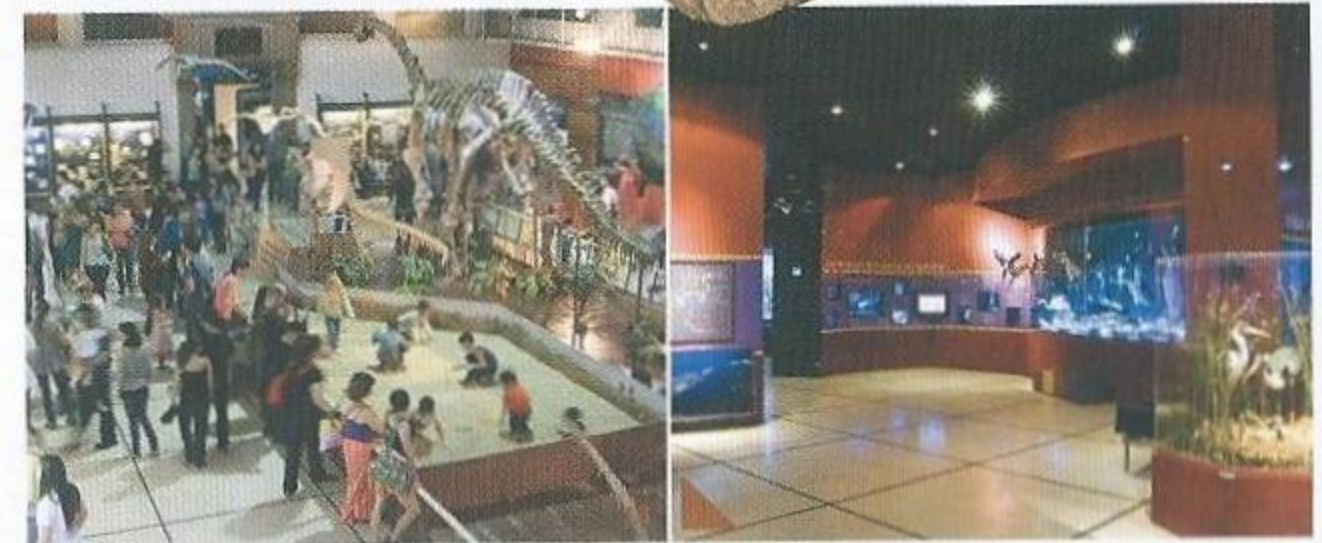
Salas actuales.

director of the Museum. In those times material started to saturate the buildings capacity up to a point that it became necessary to close its doors for lack of space. The Museum reopened in 1916. Under the direction of Martin Doello-Jurado (1923-1946) the new building in Parque Centenario was built and the Museum moved in there. This innovative management centred on increasing collections, gave impulse to research and intense disclosure of knowledge.

In 1999 Dr. Edgardo Juan Romero assumed as director. In 2011 Doctor Pablo Tubaro its present director, started his management. Now in 2012, the Museum’s Bicentenary, the institution is working hard to achieve a new balance between research and museology. Collections are preserved and studied by specialized researchers and technicians. Research jobs are not only performed at the lab, but the researchers also hold study and material collection campaigns and advice other entities in Argentina. At present, about 200,000 people visit it annually.

A tour through the Museum’s interior

A short description of some of the Museum’s halls reveals the vastness and richness of the subjects and collections: the Quaternary mammals hall, for instance, shows valuable fossil mammal species that inhabited the grounds of present Argentina (about 10,000 years old), and Palaeontology hall is one of the most important in Latin America as far as quantity and quality of the original exhibited material.



Salas actuales.

COMMEMORATIONS II

▲ 200TH anniversary of the "Bernardino Rivadavia" Argentine Natural Sciences Museum

DENOMINATION DESIGN

In all stamps, isologotype of Argentine Natural Sciences Museum - CONICET; and caption "1812-2012".

\$ 2,50 ▶ Photography of mounting -on the ground floor of the Museum's building- skeleton of elephant *Dahlia* that died at the Buenos Aires City Zoo in 1943.

\$ 2,50 ▶ View of the Museum's new Birds Hall, inaugurated at the end of 2010. Frame of the showcase showing the different functions of feathers.

\$ 2,50 ▶ Butterflies of the *Agrias narcissus* species. View of one of the collections of the Entomology Division, that holds about 2.000.000 insects.

\$ 2,50 ▶ *Bonatitan reigi* (*) sauropod dinosaur, end of Cretacic period (approx between 85 and 65 million years) found in the Province of Rio Negro, Argentine Republic and exhibited in the Museum's Paleontology Hall since 2011.

EDITION ▶ 60,000 copies each design.

DESIGN ▶ Philatelic Department, Correo Oficial de la Republica Argentina S.A.

PHOTOGRAPHY ▶ Mounting of elephant skeleton: Museum's Historical Archive. Butterflies and Birds Hall: Marcelo Canevari. *Bonatitan reigi*: Angel Fusaro.

STAMP SIZE ▶ 2 stamps of 34 x 44 mm and 2 stamps of 44 x 34 mm

LAYOUT ▶ 20 copy-sheets

PERFORATION ▶ 14

COLOUR ▶ four colours, plus a metallized ink

PAPER ▶ without any watermark, without any phosphorescence

PRINTING PROCESS ▶ offset

PRINTER ▶ Letra Viva S.A.

"FIRST DAY COVERS" ▶ 4,000 copies

Date of Issue: April 28TH, 2012

(*) *Bonatitan* Genus is a tribute to Argentine paleontologist Jose Bonaparte and *reigi* species a homage to Argentine paleontologist Osvaldo Reig.

Ventas

- VENTA FILATÉLICA APARTADO ESPECIAL N° 286 C1000ZAA CIUDAD AUTÓNOMA DE BUENOS AIRES - REPÚBLICA ARGENTINA
- SUCURSAL FILATELIA: TTE. GRAL. JUAN DOMINGO PERÓN 300 - CIUDAD AUTÓNOMA DE BUENOS AIRES - REPÚBLICA ARGENTINA
- TEL.: 54 11 4316-3469 FAX: 54 11 4316-3389
- SITIO WEB: www.correoargentino.com.ar
- E-MAIL: ventafilatelica@correoargentino.com.ar

FORMAS DE PAGO:

- Para la Argentina:
- CHEQUE A LA ORDEN DE CORREO OFICIAL DE LA REPÚBLICA ARGENTINA S.A.

- GIRO POSTAL A LA ORDEN DE CORREO OFICIAL DE LA REPÚBLICA ARGENTINA S.A. - SUCURSAL FILATELIA - OFICINA DE PAGO: C0500 - FILATELIA

Para la Argentina y otros países:
• TARJETAS DE CRÉDITO
VISA/AMERICAN/MASTERCARD

CONSULTAS:

FILATELIA - C.C. 4224 C1000WBQ - CIUDAD AUTÓNOMA DE BUENOS AIRES, REPÚBLICA ARGENTINA
TEL.: 54 11 5550-5176
FAX: 54 11 5550-5186
E-MAIL: filatelias@correoargentino.com.ar

Sales

- PHILATELIC SALES
APARTADO ESPECIAL N° 286
C1000ZAA CIUDAD AUTONOMA DE BUENOS AIRES - REPUBLICA ARGENTINA
- PHONE: 54 11 4316-3469 - FAX: 54 11 4316-3389
- E-MAIL: ventafilatelica@correoargentino.com.ar
- WEB SITE: www.correoargentino.com.ar

PAYMENTS CAN BE MADE BY:

- CREDIT CARDS VISA/AMERICAN/MASTERCARD

SHOULD YOU HAVE ANY QUERIES, PLEASE CONTACT:

- PHILATELIC DEPARTMENT - C.C. 4224 C1000WBQ
CIUDAD AUTONOMA DE BUENOS AIRES - REPUBLICA ARGENTINA
- E-MAIL: filatelias@correoargentino.com.ar

Fuentes

- Página web del Museo Argentino de Ciencias Naturales "Bernardino Rivadavia":
<http://www.macn.secyt.gov.ar>, 12/04/2012.

Agradecimientos

- Museo Argentino de Ciencias Naturales "Bernardino Rivadavia"
 - División Museología
 - División Entomología

Volante filatélico

Redacción: Silvina Cáseres
Corrección: Félix de las Mercedes
Traducción: Beatriz M. Reutlinger
Diseño matasellos: José Luis Carmona

Fotografías del volante

- 1, 4, 5 y 6: Archivo Histórico del MACN
- 2, 7, 9, 11, 12 y 13: Marcelo Canevari
- 3, 8, 10 y 14: Ángel Fusaro